

# THE NEW MG4 ELECTRIC









# Settle for more

More range. More style. More space. The new MG4 Electric is an urban hatchback with no compromises. Designed to democratise electric vehicles, it's fitted with state-of-the-art features and smart technology. Beyond eco-friendly, it's quietly impressive.

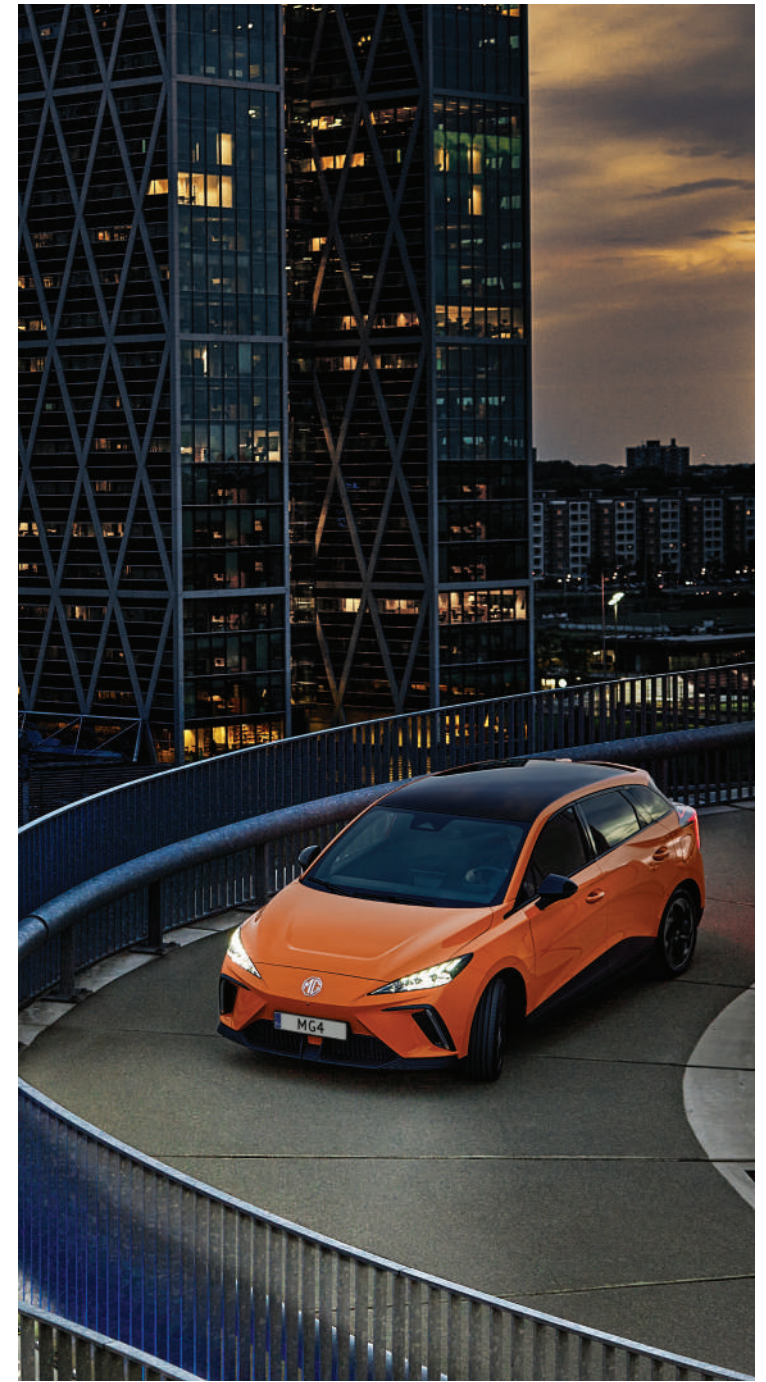






# Ready, Set, Electric

With a range of up to 520km (WLTP), it's perfect for daily travels, weekend getaways and even long road trips with your loved ones.



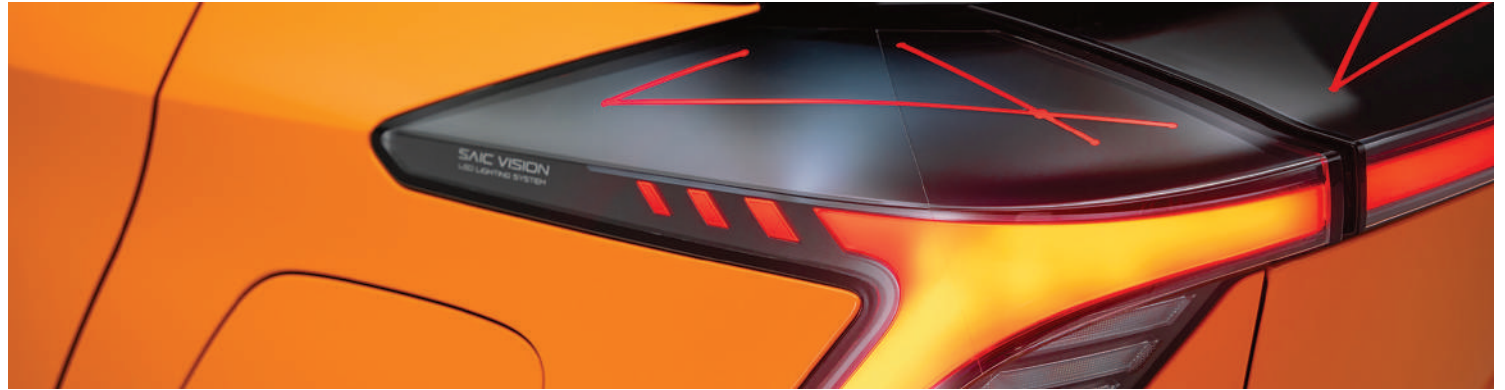


# Street art Street smart

The MG4 Electric effortlessly blends a futuristic, expressive exterior with a minimalist, user-friendly interior design. Featuring an intelligent lighting system and aerodynamic roof, it's simply a masterpiece that's ahead of its time — and others.







# Stands out, Inside out

A born-eye-magnet, it boasts distinctive LED headlights and a dual-wing spoiler with high-mount brake lights. Inside, there are the simple yet sophisticated Floating Digital Cluster and Infotainment Touchscreen, paired with a double-spoke steering wheel. It's a lean mean driving machine after all.



# Pure electric Pure pleasure

Powered by the 180kW E-Motor, it launches from 0-100km/h in just 6.5 seconds. The Rear Wheel Drive, in combination with the 50:50 weight distribution, help tame sharp corners and the tightest of curves. While the Accurate Steering provides greater steering precision and agility. Stronger and smoother, it's how an urban electric vehicle should be.





# Absolute command, and control

No two journeys are the same. That's why the MG4 Electric offers five personalised driving modes: Normal, Eco, Sport, Snow and Custom. All to ensure a remarkably comfortable driving experience wherever the road leads you. What's more, the latest Continental Braking System and all-wheel disc brakes will make every journey much safer, no matter the distance and conditions.







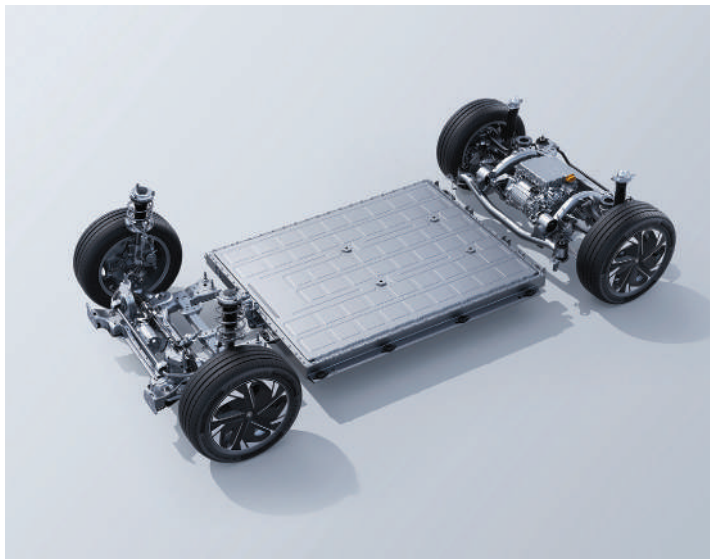
# Extra miles Extra fast charging

The MG4 Electric, with the all-new Modular Scalable EV Platform, offers an extraordinary range of 520km WLTP. The 144kW DC Fast Charging makes it possible to charge the battery up to 80% in just 26 minutes. While the 3-phase AC Charging allows for a full charge overnight (around 6.5 hours at 11kW). The advanced battery management system ensures a stable yet effective range in cold climates, and actively preheats the battery to improve charging efficiency.



# Safety, check

The ultra compact, advanced One-Pack Battery has been tested with the most stringent European and International battery standards. With the 51kWh, 64kWh and 77kWh batteries reaching the industry-leading height of only 110mm.



# New model, New platform

The all-new MG4 Electric is the first MG model based on the new MSP (Modular Scalable Platform) developed by SAIC Motor, MG's parent company. The intelligent architecture offers many benefits in terms of interior space, weight and safety — more interior space within the same exterior dimensions and significantly reduced vehicle weight for greater efficiency and handling.





# One pack, many advantages

Complementing the redesign of the advanced cooling system, the One-Pack Battery system offers three major advantages: ultra-high integration, ultra-long life and zero-thermal-runaway safety protection.



# Better Performance, More Fun

Explore the capabilities of the MSP platform and see how the MG4 Electric XPOWER is built to take your drive to the next level.



## Dual-Motor

With an engine to power the back wheels and another to power the front, the MG4 Electric XPOWER tests the limits with a max power of 320kW and max torque of 600Nm. You have to feel it to believe it.





# All-Wheel Drive

Rule the road with full-time dynamic four-wheel torque control, giving you better handling stability and a more pleasurable driving experience.

# Launch Control

Activate XPOWER in Sport mode and you will experience unparalleled acceleration, reach 100km/h in just 3.8 seconds.



# Head Turning Design

Made with envy in mind, the MG4 Electric XPOWER looks as good as it performs.



## Alcantara® Materials

Eco-Alcantara® materials enhance the MG4 interior, it's an exclusive feel, only for the MG4 Electric XPOWER Edition.





# Hunter Green

A brand new exclusive color  
just for MG4 Electric XPOWER.



# Sporty caliper & 18" rims

Control the road with style with  
improved road steering and  
brake performance.



# MG iSMART

## Simply genius

The new MG4 Electric comes standard with our innovative MG iSMART technology that seamlessly integrates car, internet and user communication. You can command the car with the hands-free voice control, and find your parked car or a nearby charging point with the MG App. You can even pre-start the climate control system with it, to cool or heat the car before you step in.



# Well connected

Wi-Fi hotspot. Bluetooth key. 10.25-inch touchscreen. Find places of interest and stream online music in a tap, or two. Schedule battery charging. Create a Wi-Fi hotspot for your passengers. Or check the weather before you leave. Do it all with MG iSMART.



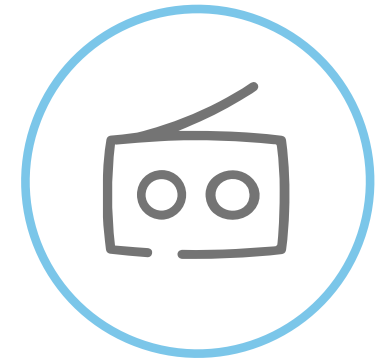
# MG iSMART



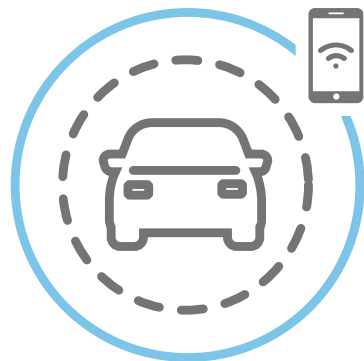
Apple CarPlay™  
and Android Auto™



Set schedule  
charging



DAB+



Vehicle status  
diagnosis



Route planner



Lock/unlock car

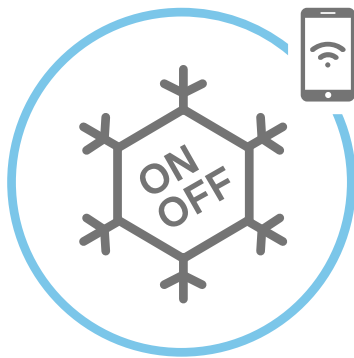




Range visualisation and charging point



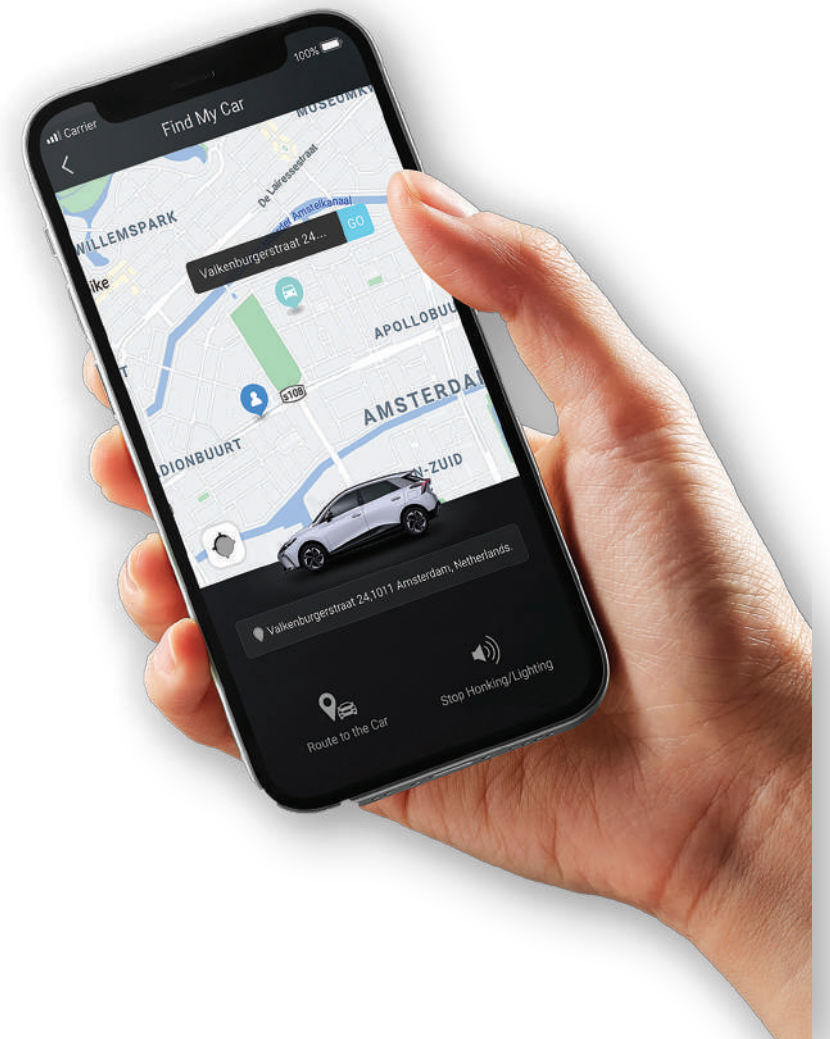
Find your vehicle



App remote control

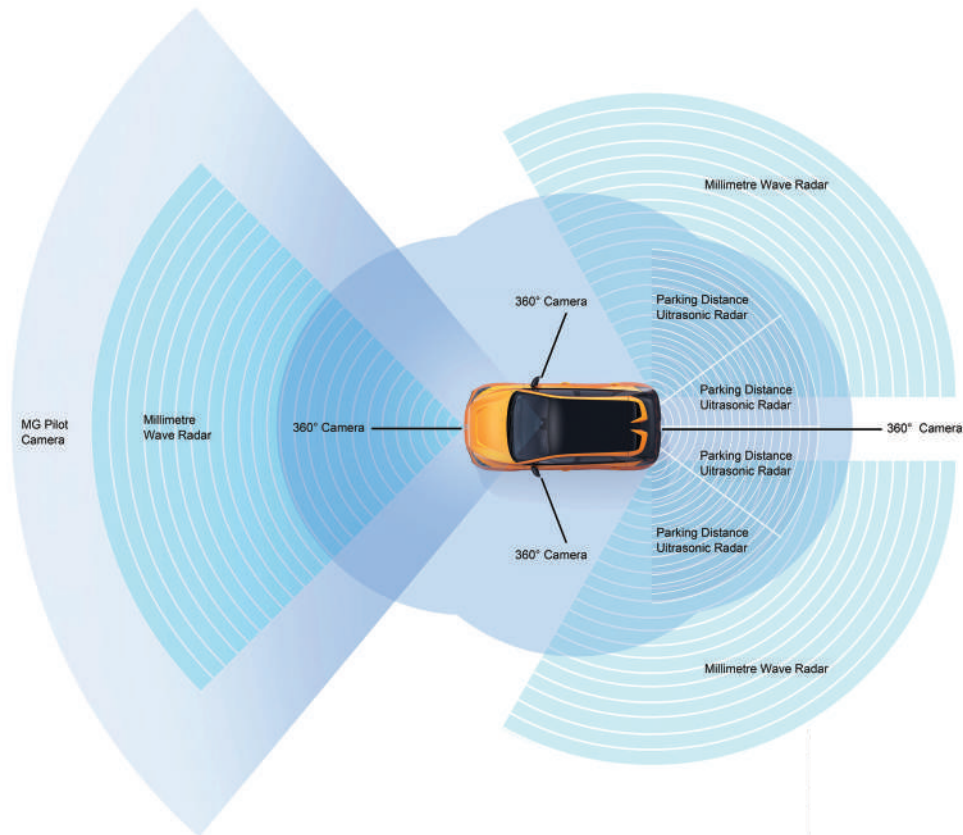


Bluetooth key



# MG Pilot Safer journey

The MG4 Electric offers MG's own advanced safety system as standard. MG Pilot is an extensive suite of partly automated driver-assistance technologies that give you a helping hand and added confidence on the road.







- ✔ Adaptive Cruise Control (ACC)
- ✔ Intelligent High Beam Control (IHBC)
- ✔ Speed Assistance System (SAS)
- ✔ Automatic Emergency Braking (AEB)
- ✔ Lane Departure Warning (LDW)
- ✔ Traffic Jam Assistance (TJA)
- ✔ Lane Keep Assistance (LKA)
- ✔ Lane Change Warning (LCW)
- ✔ Emergency Lane Keeping (ELK)\*
- ✔ Blind Spot Monitoring (BSM)
- ✔ Rear Cross Traffic Alert (RCTA)
- ✔ Door Open Warning (DOW)
- ✔ Rear Collision Warning (RCW)

\*Road lane/edge only



# More space More convenience

A compact hatchback, the MG4 Electric offers a surprisingly spacious cabin that can fit a family of five, and 60:40 foldable rear seats for extra flexibility. There's also ample interior storage space that allows you to store all your belongings efficiently and conveniently. In addition, the 360° camera captures the environment around the vehicle in real time. Reducing blind spots and making driving, and parking, a whole lot easier and safer.





# and there's more

Want to charge external appliances? There's the 2,200W V2L. Need to charge your devices? There's the wireless charging tray. 500kg towing capacity, check. Keyless entry, check. Keyless Start, impressive. Say goodbye to Start/Stop button. To start the vehicle, just depress the brake pedal. To stop, simply press down the shift selector to Parking mode and release the brake pedal. It's electric mobility at its finest.



# Your ride. Your style

Choose between Standard, Comfort and Luxury trims.

And turn heads along the way to your destinations.



● Pebble Black



● Brighton Blue



● Andes Grey



● Fizzy Orange



● Diamond Red



● Medal Silver



○ Dover White



● Hunter Green



# Pick your style

Three editions, your choice

Standard and Comfort



Black interior: fabric seats black

Luxury and Trophy Extended Range



PU + Fabric seats black

XPOWER



Alcantara® + PU Seats



Alloy rim 17" with two tone wheelcap – Standard and Comfort



Alloy rim 18" with two tone wheelcap – Luxury and Trophy Extended Range



Alloy rim 18" with Sporty Caliper







# Technical parameters\*

Dimension and Weight	Standard	Comfort	Luxury	Trophy Extended Range	XPOWER
Length (mm)			4287		
Width (mm)			1836		
Height (mm)	1504	1504	1516	1516	1516
Wheelbase (mm)			2705		
Ground clearance unladen / laden (mm)	150/117	150/117	160/132	160/132	160/132
Rear trunk cargo space (unfold/fold, L)	363/1177	363/1177	350/1165	363/1165	363/1177
Unladen mass (kg)	1635	1651	1675	1751	1803
Technically permissible maximum laden mass (kg)	2083	2113	2123	2209	2261
Technically permissible laden mass on each axle (kg)	F: 935 / R: 1198	F: 940 / R: 1198	F: 1070 / R: 1250		
Towing capacity (unbraked, kg)			500		
Towing capacity (braked, kg)			500		

## Electric Motor and Battery

Type	PMSM	PMSM	PMSM	PMSM	PMSM
Max Net Power (kW)	125kW	150kW	150kW	180kW	320kW
Max Torque (Nm)	250Nm	250Nm	250Nm	350Nm	600Nm

Electric motor and battery (continued)	Standard	Comfort	Luxury	Trophy Extended Range	XPOWER
Battery (kWh)	51	64	64	77	64
On-board charger max power (6.6 kW)	●	○	○	○	○
On-board charger max power (11 kW)	-	●	●	●	●
Max DC charging power (kW)	88	140	140	144	140
DC charging time (10-80%)	37min	26min	26min	38min	26min

## Performance

Max speed (km/h)	160km/h	160km/h	160km/h	180km/h	200km/h
Acceleration (s, 0-100km/h)	7.7 Secs	7.9 Secs	7.9 Secs	6.5 Secs	3.8 Secs
EV range (km, WLTP)	350km	450km	435km	520km	385km
Energy consumption (Wh/km)	170	160	166	165	187



\*Final version subject to homologation figures

# Features

	Standard	Comfort	Luxury	Trophy Extended Range	XPOWER		Standard	Comfort	Luxury	Trophy Extended Range	XPOWER
<b>Safety</b>						<b>MP Pilot (continued)</b>					
Autohold	●	●	●	●	●	Lane change assistant (LCA)	-	-	●	●	●
EPB	●	●	●	●	●	Blind Spot Monitoring (BSM)	-	-	●	●	●
Rear seat ISOFIX with upper tether & lower anchor	●	●	●	●	●	Rear Cross Traffic Alert (RCTA)	-	-	●	●	●
3 rear headrests	●	●	●	●	●	Rear Collision Warning (RCW)	-	-	●	●	●
TPMS	●	●	●	●	●	Door Open Warning (DOW)	-	-	●	●	●
<b>Airbag</b>						XDS	-	-	-	-	●
Front airbags for driver and passenger	●	●	●	●	●	One Pedal	●	●	●	●	●
Side airbags for driver and passenger	●	●	●	●	●	Launch Control	-	-	-	-	●
Side curtain airbags for driver and passenger	●	●	●	●	●	<b>Lights</b>					
Co-driver side airbag switch	●	●	●	●	●	LED daytime running light	●	●	●	●	●
<b>MG Pilot</b>						LED headlight	●	●	●	●	●
Adaptive Cruise Control (ACC)	●	●	●	●	●	Headlamp integrated front turn indicator	●	●	-	-	-
Automatic Emergency Braking (AEB)	●	●	●	●	●	Vertical design front LED turn indicator	-	-	●	●	●
Intelligent High Beam Control (IHBC)	●	●	●	●	●	Corner LED tail light with decoration light	●	●	-	-	-
Speed Assistance System (SAS)	●	●	●	●	●	Full width LED tail light with decoration light	-	-	●	●	●
Traffic Jam Assistance (TJA)	●	●	●	●	●	Rear fog lamp	●	●	●	●	●
Unsteady Driving Warning (UDW)	●	●	●	●	●	Automatic light sensor	●	●	●	●	●
Lane Departure Warning (LDW)	●	●	●	●	●	High-mounted brake light	●	●	●	●	●
Lane Keep Assistance (LKA)	●	●	●	●	●	<b>Park assist</b>					
Emergency Lane Keep (ELK)	-	-	●	●	●	Rear parking sensor	●	●	●	●	●
						360 camera with transparent chassis view	-	-	●	●	●



# Features (continued)

Safety Belt	Standard	Comfort	Luxury	Trophy Extended Range	XPOWER
Front 3-point + pretensioner and load limiter	●	●	●	●	●
Rear 3 seats 3 point + pretensioner	●	●	●	●	●
Front and rear safety belt reminder	●	●	●	●	●
<b>Convenience</b>					
V2L	●	●	●	●	●
Front 12V socket	●	●	●	●	●
Trunk lamp	●	●	●	●	●
Sunvisor	●	-	-	-	-
Sunvisor with mirror	-	●	●	●	●
Auto anti-dazzling interior mirror	-	-	●	●	●
<b>HVAC</b>					
Heat pump	-	-	●	●	●
Automatic control air conditioning	●	●	●	●	●
<b>Power windows</b>					
Driver Side window auto up&down with anti-pinch	●	●	-	-	-
All window auto up&down	-	-	●	●	●
All window anti-pinch	-	-	●	●	●

Steering wheel	Standard	Comfort	Luxury	Trophy Extended Range	XPOWER
PU	●	-	-	-	-
Microfiber leather	-	●	●	●	●
Heated steering wheel	-	-	●	●	●
4 way adj. multifunction steering wheel	●	●	●	●	●
<b>Infotainment</b>					
7 inch Virtual cluster	●	●	●	●	●
DAB+	●	●	●	●	●
4 Speakers	●	●	-	-	-
6 Speakers	-	-	●	●	●
1 microphone	●	●	-	-	-
2 microphones	-	-	●	●	●
3 USB ports (F: USB A , USB C / R: USB A)	●	●	●	●	●
Mobile phone wireless charger	-	-	●	●	●
Bluetooth	●	●	●	●	●
Track Mode Display	-	-	-	-	●
<b>MG iSMART</b>					
iSMART Lite 10.25 inch	●	●	-	-	-
Mobile APP with Remote control	●	●	●	●	●
Apple Carplay/Android Auto	●	●	●	●	●
iSMART 10.25 inch	-	-	●	●	●

# Features (continued)

<b>MG iSMART (continued)</b>	Standard	Comfort	Luxury	Trophy Extended Range	XPOWER	<b>Exterior (continued)</b>	Standard	Comfort	Luxury	Trophy Extended Range	XPOWER
Voice control	-	-	●	●	●	Low mounted spoiler	●	●	-	-	-
Real Time Traffic Information	-	-	●	●	●	High mounted twin spoiler	-	-	●	●	●
Navigation	-	-	●	●	●	Rear Wiper	●	●	●	●	●
Wifi hotspot	-	-	●	●	●	Boneless front wiper	●	●	●	●	●
						Tinted windows	●	●	●	●	●
<b>Access &amp; Start</b>						Privacy rear windows	-	●	●	●	●
Remote lock	●	●	●	●	●	Active Grille Shutter	-	●	●	●	●
Keyless entry	●	●	●	●	●						
Automatic Start (Vehicle starts by pushing the brake pedal)	●	●	●	●	●	<b>Outside Mirrors</b>					
						Manual Fold + Heating	●	●	-	-	-
<b>Seats</b>						Auto Fold + Heating	-	-	●	●	●
Driver seat 6 ways adjustable	●	●	●	●	●	<b>Rim and Tyre</b>					
Driver side electrical adjustable	-	-	●	●	●	215/50 R17 95V	●	●	-	-	-
Co-driver seat 4 ways adjustable	●	●	●	●	●	Alloy rim 17" with two tone wheelcap	●	●	-	-	-
Map pocket behind the front seats	-	-	●	●	●	235/45 R18	-	-	●	●	●
Fabric seats	●	●	-	-	-	Alloy rim 18" with two tone wheelcap	-	-	●	●	-
PU + fabric seats	-	-	●	●	-	Alloy rim 18	-	-	-	-	●
Alcantara+PU Seats	-	-	-	-	●	Tyre repair set	●	●	●	●	●
Heated front seats	-	-	●	●	●	Sporty Caliper	-	-	-	-	●
40:60 foldable rear seats	●	●	●	●	●						
Sporty Pedals	-	-	-	-	●						



## Features (continued)

Exterior Colors	Standard	Comfort	Luxury	Trophy Extended Range	XPOWER
Pebble Black	○	○	○	●	●
Diamond Red	○	○	○	-	-
Medal Silver	○	○	○	-	-
Dover White	●	●	●	-	-
Brighton Blue	○	○	○	-	-
Fizzy Orange	○	○	○	-	-
Andes Grey	○	○	○	-	-
Diamond Red + Black roof	-	-	-	○	○
Dover White + Black roof	-	-	-	○	○
Brighton Blue+ Black roof	-	-	-	○	○
Andes Grey + Black roof	-	-	-	○	○
Medal Silver + Black roof	-	-	-	○	○
Fizzy Orange + Black roof	-	-	-	○	○
Hunter Green + Black roof	-	-	-	-	○
<b>Interior Colors</b>					
Black	●	●	●	●	-
Alcantara® Black Interior	-	-	-	-	●
Dual Color (Grey/White)	-	-	○	○	-









→ [mgmotor.eu](https://mgmotor.eu)

## THE MG4 ELECTRIC COMES WITH A 7 YEARS/ 150,000KM WARRANTY POLICY

- ⊕ Basic vehicle warranty: 7 years/150,000km
- ⊕ HV Electric Drive system: 7 years/150,000km
- ⊕ Power Pack (HV battery): 7 years/150,000km
- ⊕ Anti-perforation: 7 years/unlimited
- ⊕ Road assistant: 1<sup>st</sup> year included, 2<sup>nd</sup> to 7<sup>th</sup> year for all customers who have a complete service record with an MG dealer

### Terms and conditions

Every effort has been made to ensure that the contents of this publication were accurate and up to date at the time of publication (July 2023). Please note colours and accessories are for illustrative purposes only. Colours and finishes replicated are subject to limitations of the printing process and may vary from actual colour and paint finish. MG Motor Europe endorses a policy of continuous improvement and reserves the right to make changes at any time without notice to colours, accessories, material, design, shape, specification and models. Items may be discontinued at any time. Actual specifications may vary from vehicles shown. For latest information, please speak to your MG dealer.

Published July 2023. Version 2.